

GENERAL NOTES

THIS WORK CONSISTS OF THE MAINTENANCE OF TRAFFIC AND THE PROTECTION OF THE TRAVELING PUBLIC APPROACHING THE CONSTRUCTION AREA AND WITHIN THE LIMITS OF CONSTRUCTION.

FURNISH, ERECT, PLACE AND MAINTAIN TRAFFIC CONTROL SIGNS AND DEVICES AND MAINTAIN TRAFFIC DURING HOURS OF CONSTRUCTION AND AT ALL OTHER TIMES IN ACCORDANCE WITH THE METHODS INDICATED ON THESE DRAWINGS AND:

1. THE SPECIAL PROVISIONS OF THE CONTRACT.
2. PA CODE, TITLE 67, CHAPTER 212, OFFICIAL TRAFFIC CONTROL DEVICES.
3. PDT PUBLICATION 213, TEMPORARY TRAFFIC CONTROL GUIDELINES.
4. PDT PUBLICATION 35, APPROVED CONSTRUCTION MATERIALS (BULLETIN 15).
5. RBRP MODIFIED PUB NO 408.
6. MANUAL ON UNIFORM TRAFFIC CONTROL DEVICES (MUTCD).
7. PDT PUBLICATION 46, TRAFFIC ENGINEERING MANUAL
8. PDT PUBLICATION 111, TRAFFIC CONTROL PAVEMENT MARKING AND SIGNING STANDARDS TC-8600 AND 8700

IMMEDIATELY UPON COMPLETION OF THE WORK, REMOVE THE DEVICES. THE DEVELOPMENT ENTITY WILL REMOVE ANY TRAFFIC CONTROL DEVICES ERECTED BY THEIR FORCES.

CONTRACTOR SHALL NOTIFY THE DEVELOPMENT ENTITY A MINIMUM OF 20 DAYS IN ADVANCE OF WHEN THE DETOUR OR TRAFFIC RESTRICTION OF ANY KIND WILL OCCUR AND THE APPROXIMATE DURATION OF SAME. IF AND WHEN A PRIVATE PROJECT IS IDENTIFIED THAT MAY BE IMPACTED BY OR CAUSE IMPACT TO BRIDGE CONSTRUCTION, REASONABLE ACCOMMODATIONS SHALL BE MADE TO MODIFY TCP TO COORDINATE ACTIVITIES WITH THE PRIVATE PROJECT OR NEGOTIATE WITH PRIVATE PROJECT OWNER TO COORDINATE SCHEDULES.

ALL TRAFFIC CONTROL DEVICES MUST BE IN PLACE AND INSPECTED BY THE DEVELOPMENT ENTITY BEFORE WORK BEGINS. REPLACE ANY DAMAGED OR MISSING SIGNS, BARRICADES, LIGHTS OR OTHER TRAFFIC CONTROL DEVICES WITHIN 24 HOURS AT NO COST TO THE DEVELOPMENT ENTITY. MAINTAIN ALL TRAFFIC CONTROL DEVICES IN NEW OR LIKE NEW CONDITION, AS DETERMINED BY THE DEVELOPMENT ENTITY.

ALL SIGNS EITHER CONFLICTING, OR NOT IN USE, MUST BE EITHER COVERED OR REMOVED FROM SIGHT. DO NOT USE ADHESIVE ON FACE OF SIGNS.

ALL SIGNS TO BE REFLECTORIZED OR ILLUMINATED DURING HOURS OF DARKNESS.

MODIFY EXISTING TRAFFIC CONTROL DEVICES AS REQUIRED FOR THE DURATION OF THE WORK.

AS PER TECHNICAL PROVISION (TP) 16.2.1, POST-MOUNTED SIGNS SHALL BE ERECTED FOURTEEN (14) DAYS PRIOR TO ANY ACTUAL ROADWAY CLOSURE OR MAJOR TRAFFIC MODIFICATION. WHERE AVAILABLE AND WHEN POSSIBLE, THE DEVELOPMENT ENTITY WILL COORDINATE WITH PENNDOT OR ARRANGE FOR THE PUBLIC INFORMATION OFFICE TO REQUEST TO PLACE APPROPRIATE MESSAGING ON THE REGIONAL ITS SYSTEM. THE TRANSITION INTO THE CONSTRUCTION TRAFFIC CONTROL AND TRANSITION BETWEEN CONSTRUCTION STAGES WILL BE DONE AT A TIME THAT DOES NOT CAUSE MAJOR TRAFFIC BACKUPS, OR DURING OFF-PEAK HOURS.

ACCESS TO SIDE ROADS AND DRIVEWAYS MUST BE MAINTAINED AT ALL TIMES. ACCESS TO RESIDENCES AND BUSINESSES MUST BE MAINTAINED AT ALL TIMES.

ALL SIGNS ARE TO REMAIN IN GOOD CONDITION FOR THE DURATION OF THIS PROJECT.

ASSURE THAT OSHA COMPLIANT WARNING VESTS, MEETING THE REQUIREMENTS OF PDT PUBLICATION 213, ANSI CLASS 2 OR 3, ARE WORN BY ALL PERSONS ENGAGED IN WORK OPERATIONS. WHEN WORKING AT NIGHT, WORKER'S SAFETY GARMENT SHALL BE REFLECTORIZED.

DISTANCES MAY BE SLIGHTLY ADJUSTED TO FIT FIELD CONDITIONS. MAINTAIN ALL OFFICIAL EXISTING ROADWAY SIGNS. THIS TRAFFIC CONTROL PLAN DOES NOT RELIEVE THE CONTRACTOR OF HIS RESPONSIBILITY AS SPECIFIED IN SECTION 901.3 OF RBRP MODIFIED PUBLICATION NO 408.

DO NOT LEAVE EQUIPMENT OR MATERIAL ALONG ROADWAY OR OUTSIDE OF A SUITABLY PROTECTED AREA. EQUIPMENT AND MATERIALS MUST BE STAGED AS TO NOT IMPEDE SIGHT DISTANCE.

ALL WORK IS TO BE PERFORMED WITHIN THE LEGAL RIGHT-OF-WAY AND TEMPORARY CONSTRUCTION EASEMENTS.

PROVIDE THE NAME AND PHONE NUMBER OF A DESIGNATED TRAFFIC CONTROL FOREMAN TO THE DEVELOPMENT ENTITY. THE FOREMAN MUST BE ON CALL AND AVAILABLE 24 HOURS A DAY, 7 DAYS A WEEK. THE FOREMAN MUST BE ABLE TO BE AT THE PROJECT SITE WITHIN TWO (2) HOURS OF THE INITIAL CALL AND BE RESPONSIBLE FOR AND FAMILIAR WITH THE PROJECT TRAFFIC CONTROL LAYOUT. THE FOREMAN SHALL MAINTAIN A DAILY RECORD OF CRASHES AND WORK ZONE INCIDENTS. NOTIFY THE DEVELOPMENT ENTITY IMMEDIATELY IF TRAFFIC FOREMAN PERSONNEL OR CONTACT INFORMATION CHANGES.

FLAG PERSONS ARE TO BE IN RADIO COMMUNICATION AT ALL TIMES DURING WORKING HOURS. FLAG PERSONS SHALL WEAR YELLOW/GREEN VESTS AND LEGGINGS AS PER REQUIREMENTS OF PDT PUBLICATION 213.

THE REQUIRED NUMBER OF LANES PROPOSED TO STAY OPEN DURING EACH TIMEFRAME MUST BE OPEN OR CONTRACTOR WILL BE SUBJECT TO LIQUIDATED DAMAGES.

WORK MAY NOT BE SHUT DOWN AND A CONSISTENT PRESENCE AT THE SITE IS EXPECTED, AND AT NO TIME WILL THE SITE BE LEFT INACTIVE FOR MORE THAN 14 DAYS.

CONTRACTOR SHALL COMPLY WITH THE REQUIREMENTS OF TECHNICAL PROVISIONS (TP) SECTION 16, INCLUDING, BUT NOT LIMITED TO NOTIFYING PENNDOT, REGIONAL TRAFFIC MANAGEMENT CENTER (RTMC), AND PUBLIC, AS REQUIRED. ALSO, THE CONTRACTOR SHALL PREPARE AND SUBMIT ALL PENNDOT PERMITS, AS REQUIRED.

GENERAL NOTES (CONTINUED)

BEFORE THE BRIDGE CAN BE OPENED TO ITS PERMANENT TRAFFIC CONFIGURATIONS, THESE ITEMS SHALL BE ADDRESSED:

1. TEMPORARY LINE STRIPING FOR TEMPORARY TRAFFIC CONFIGURATIONS WILL BE ERADICATED. NEW LINES FOR THE FINAL ALIGNMENT WILL BE IN PLACE.
2. TEMPORARY BARRIER WILL BE REMOVED AND HOLES WILL BE GROUTED WHERE ANY STRUCTURE MOUNTED BARRIER WAS FASTENED. ALL PERMANENT GUIDE RAIL OR BARRIER WILL BE IN PLACE.
3. TEMPORARY SIGNS WILL BE REMOVED, AND ALL PERMANENT SIGNS WILL BE IN PLACE.
4. ALL TEMPORARY CHANNELIZING DEVICES WILL BE REMOVED AND ANY PERMANENT DELINEATORS OR REFLECTORS WILL BE IN PLACE.
5. IF THERE IS A DETOUR IN PLACE, DETOUR SIGNAGE WILL BE REMOVED UPON OPENING THE BRIDGE TO PERMANENT TRAFFIC.
6. ANY MESSAGE BOARDS OR ARROW BOARDS WILL BE REMOVED.

ALL CONSTRUCTION VEHICLES ENTERING OR EXITING THE ROADWAY WILL HAVE A VISIBLE FLASHING LIGHT AS REQUIRED.

NIGHT WORK WILL BE IN ACCORDANCE WITH PDT PUBLICATION 213 AND NIGHT TIME LIGHT SYSTEM SHALL BE IN ACCORDANCE WITH NCHRP REPORT-ILLUMINATION GUIDELINES FOR NIGHT TIME HIGHWAY WORK. LIGHTS SHALL BE POSITIONED IN A MANNER THAT DOES NOT CAST A DIRECT BEAM INTO THE SIGHT OF MOTORISTS, AND ALL FLAGGERS SHALL WEAR TYPE 3 REFLECTIVE GARMENTS TO REMAIN HIGHLY VISIBLE AT NIGHT.

AS PER TECHNICAL PROVISION 10-1, THE TCP WILL COMPLY WITH ALL MANDATORY TRAFFIC CONTROL REQUIREMENTS RELATED WITH SPECIAL EVENTS (INCLUDING FAIRS, EXPOSITIONS, SHOWS, COMMUNITY EVENTS, ETC.).

THE CONTRACTOR IS RESPONSIBLE FOR CONTACTING THE PA ONE CALL SYSTEM, AT 1-800-242-1776 AT LEAST THREE (3) FULL WORKING DAYS PRIOR TO DIGGING. PA ONE CALL SHOULD BE CONTACTED BEFORE ANY SIGN POST ANCHOR IS DRIVEN INTO THE GROUND FOR TEMPORARY OR PERMANENT SIGNING.

FOR DETOUR PROJECTS ONLY:

INSTALL W23-101 (96"x 48") "THIS BRIDGE TO BE CLOSED FOR CONSTRUCTION MM/DD/YYYY" SIGN FOURTEEN (14) DAYS PRIOR TO CONSTRUCTION. REMOVE WHEN WORK STARTS. THIS SIGN SHALL BE INSTALLED ON A TYPE 111 BARRICADE.

TRAFFIC CONTROL STANDARDS:

* DENOTES STANDARDS APPLICABLE TO THIS PLAN SET

TC-8600	13 SHEETS	JUN 13, 2013
TC-8604	4 SHEETS	JUN 13, 2013
TC-8700C	12 SHEETS	JUN 13, 2013
TC-8701A	13 SHEETS	JUN 13, 2013
TC-8701D	13 SHEETS	JUN 13, 2013
TC-8701E	2 SHEETS	JUN 13, 2013
TC-8701P	1 SHEET	JUN 13, 2013
TC-8701R	1 SHEET	JUN 13, 2013
TC-8701S	4 SHEETS	JUN 13, 2013
TC-8701W	1 SHEET	JUN 13, 2013
TC-8702A	8 SHEETS	JUN 13, 2013
TC-8702B	9 SHEETS	JUN 13, 2013
TC-8702C	2 SHEETS	JUN 13, 2013
TC-8702D	2 SHEETS	JUN 13, 2013
TC-8702E	5 SHEETS	JUN 13, 2013
TC-8710	1 SHEET	JUN 13, 2013
TC-8715	4 SHEETS	JUN 13, 2013
* TC-8716	1 SHEET	JUN 13, 2013
* TC-8717	1 SHEET	JUN 13, 2013

DISTRICT	COUNTY	ROUTE	SECTION	SHEET
8-0	LANCASTER	2002	000	1 OF 2
LITTLE BRITAIN TOWNSHIP				
REVISION NUMBER	REVISIONS	DATE	BY	

SEQUENCE OF CONSTRUCTION

PRE-CONSTRUCTION PHASE:

- POST NOTIFICATION SIGNS (W23-101) ON T316 (KIRKS MILL RD) AT BRIDGE TO NOTIFY PUBLIC OF UPCOMING ROAD CLOSURE.

CONSTRUCTION:

- INSTALLATION OF TEMPORARY TRAFFIC CONTROL DEVICES, BARRICADES AND DETOUR SIGNS.
- REMOVAL OR COVERING OF CONFLICTING SIGNAGE.

TRAFFIC:

- T316 (KIRKS MILL RD) TRAFFIC MAINTAINED IN ACCORDANCE WITH PATA 107 AND/OR 006 WHEN CONDITIONS WARRANT.

PHASE I

CONSTRUCTION:

- REMOVAL OF THE EXISTING STRUCTURE.
- CONSTRUCTION OF THE PROPOSED STRUCTURE, ROADWAY, AND GUIDE RAIL.

TRAFFIC:

- T316 (KIRKS MILL RD) TRAFFIC DETOURED USING SR 2003 (LITTLE BRITAIN RD) AND SR 272 (NOTTINGHAM RD) IN ACCORDANCE WITH THE APPROVED TRAFFIC CONTROL PLAN AND IN ACCORDANCE WITH PATA FIGURE 216.

POST-CONSTRUCTION PHASE

CONSTRUCTION:

- REMOVAL OF TRAFFIC CONTROL DEVICES, BARRICADES AND DETOUR SIGNS.
- UNCOVER OR RE-INSTALL EXISTING SIGNAGE.
- RESTORE TRAFFIC TO NORMAL OPERATIONS ALONG T316 (KIRKS MILL RD).

TRAFFIC:

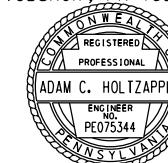
- T316 (KIRKS MILL RD) TRAFFIC MAINTAINED IN ACCORDANCE WITH PATA 107 AND/OR 006 WHEN CONDITIONS WARRANT.

DETOUR REQUIREMENTS

- DETOUR PROHIBITED FROM NOVEMBER 15TH TO MARCH 15TH.
- DETOUR ONLY DURING ONE SCHOOL SESSION.

PREPARED BY:

HDR
HDR ENGINEERING, INC.
11 STANWIX ST., SUITE 800
PITTSBURGH, PA 15222



RECOMMENDED

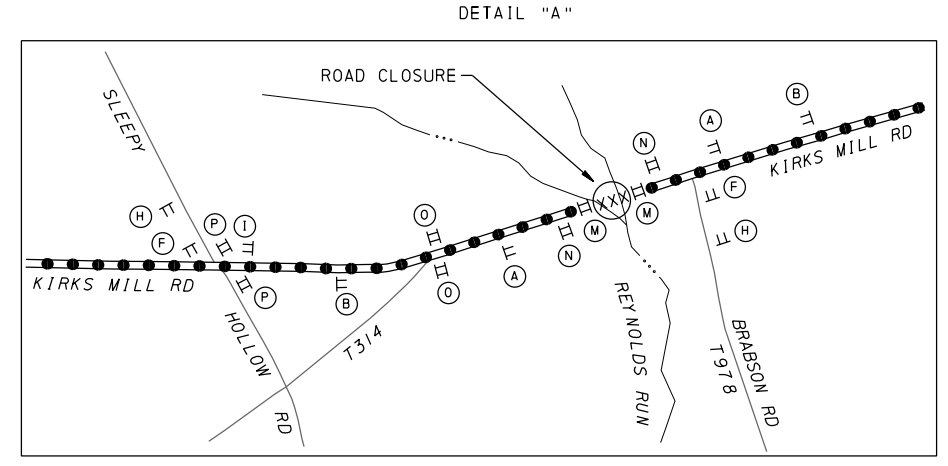
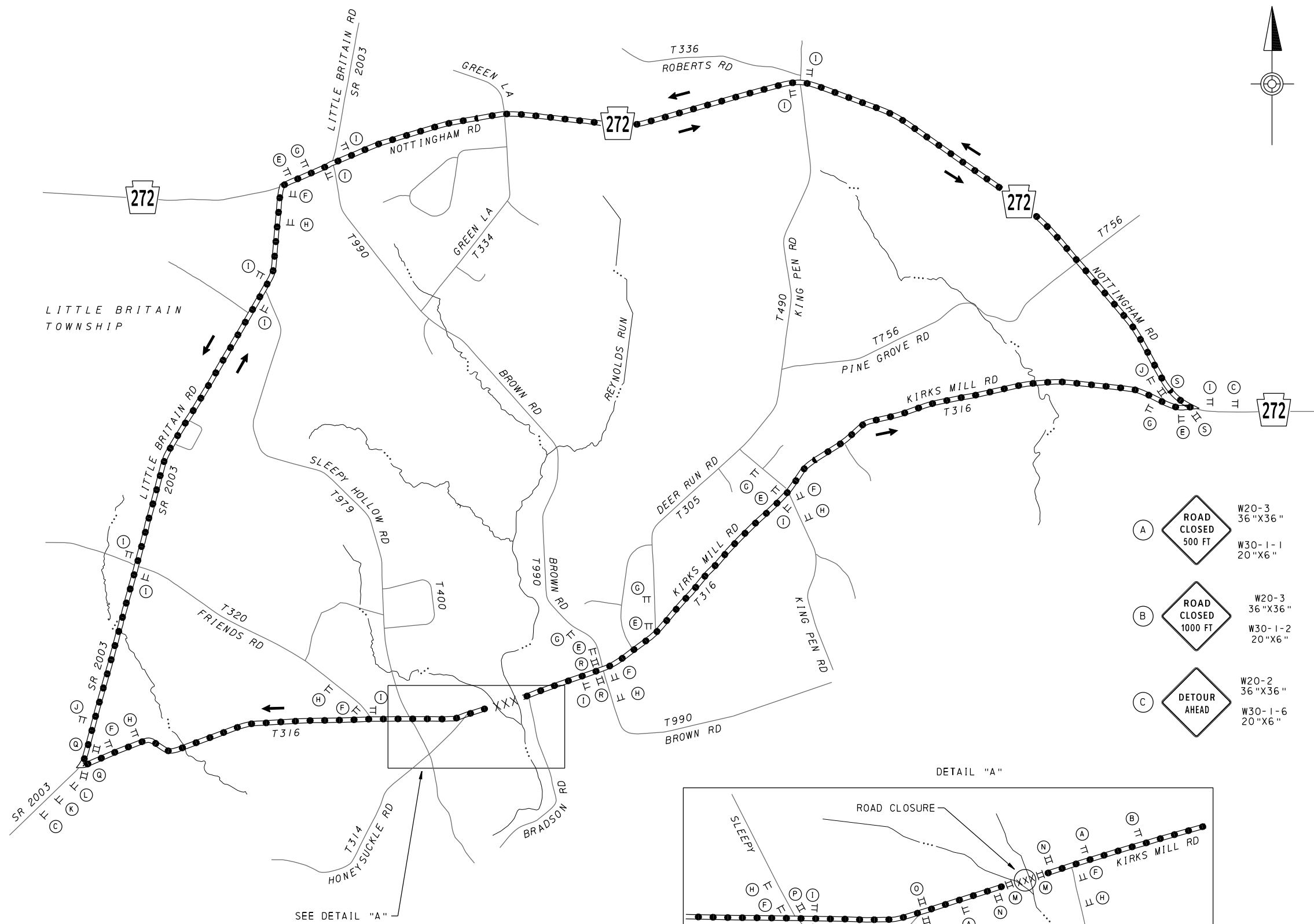
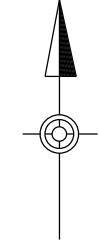
DISTRICT TRAFFIC ENGINEER DATE

REGISTERED PROFESSIONAL ENGINEER
DATE: 04/05/2016

TRAFFIC CONTROL PLAN

USER: JAEVANS PLOT: DRIVER: PgmDOT.PDF, Mono.plt, ctf, g PLOT DATE: 03-27-2016 11:38:54 PM
 PATH: 000001\CON0904634\00000000245595\6_0_CAD_BLM\6_2_Work_In_Progress\6_2_2_Contract-Files\6_2_2_1_Sheet-F-Files\NOT
 FILE: RBRP-JV273-TC-GEN-01.dgn MODEL: Dwg.fou11

DISTRICT	COUNTY	ROUTE	SECTION	SHEET
8-0	LANCASTER	2002	000	2 OF 2
LITTLE BRITAIN TOWNSHIP				
REVISION NUMBER	REVISIONS	DATE	BY	

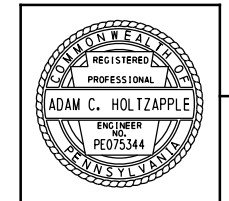


(E)	DETOUR	M4-9L 30"x24"	(O)	ROAD CLOSED 750 FEET AHEAD LOCAL TRAFFIC ONLY	R11-3A 60"x30"
(F)	DETOUR	M4-9R 30"x24"	(P)	ROAD CLOSED 3/8 MILE AHEAD LOCAL TRAFFIC ONLY	R11-3A 60"x30"
(G)	DETOUR	M4-9SL 30"x24"	(Q)	ROAD CLOSED 1 1/2 MILES AHEAD LOCAL TRAFFIC ONLY	R11-3A 60"x30"
(H)	DETOUR	M4-9SR 30"x24"	(R)	ROAD CLOSED 1/4 MILE AHEAD LOCAL TRAFFIC ONLY	R11-3A 60"x30"
(I)	DETOUR	M4-9S 30"x24"	(S)	ROAD CLOSED 2 1/2 MILES AHEAD LOCAL TRAFFIC ONLY	R11-3A 60"x30"
(J)	END DETOUR	M4-8A 24"x18"	(M)	ROAD CLOSED	R11-2 48"x30"
(K)	DETOUR	M4-9-IAL 30"x24"	(N)	THIS BRIDGE TO BE CLOSED FOR CONSTRUCTION MM/DD/YYYY	W23-101 96"x48"
(L)	DETOUR	M4-9-IBL 30"x24"	(A)	ROAD CLOSED 500 FT	W20-3 36"x36"
(M)	ROAD CLOSED		(B)	ROAD CLOSED 1000 FT	W20-3 36"x36"
(N)	ROAD CLOSED		(C)	DETOUR AHEAD	W20-2 36"x36"

NOTE: TYPE III BARRICADE EXTENDS ACROSS THE EXTENT OF THE ROADWAY

- LEGEND**
- XXXXX AREA OF CLOSURE
 - DETOUR ROUTE
 - TRAFFIC FLOW
 - TT TEMPORARY SIGN
 - II TYPE III BARRICADE
 - (A) SIGN LETTER

DETOUR LENGTH = 5.20 MILES
MAP NOT TO SCALE



DETOUR PLAN
T-316 (KIRKS MILL RD)
CLOSED

TRAFFIC CONTROL PLAN

USER: JAEVANS PLOT DRIVER: PgmDOT.PDF PLOT DATE: 03-27-2016 2:12:25 PM
 PATH: O:\00001\CON0946\4\00000000245595\6_0_CAD_BLM\6_2_Work_In_Progress\6_2_2_Contract\Files\...
 FILE: RBRP-JV273-TC-DETOUR.dgn MODEL: De fou 1